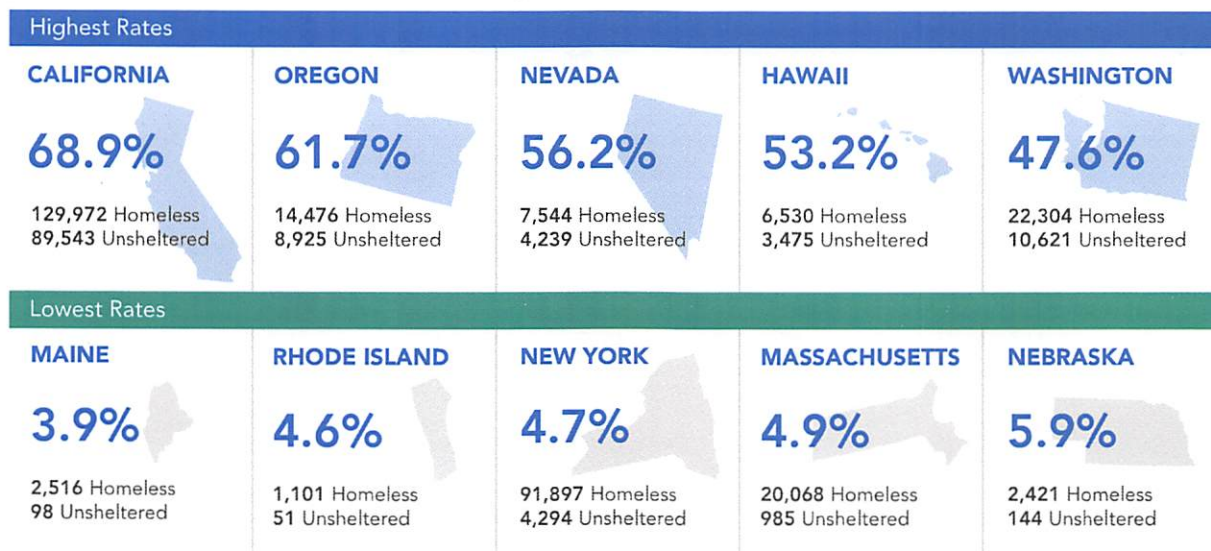


### EXHIBIT 1.7: States with the Highest and Lowest Rates of Unsheltered People Experiencing Homelessness

2018



### EXHIBIT 1.8: Largest Changes in Homelessness by State

By State, 2007–2018

	2017–2018	2007–2018
Largest Increases		
<b>MASSACHUSETTS</b>	2,503 / 14.2%	<b>NEW YORK</b> 29,296 / 46.8%
<b>NEW YORK</b>	2,394 / 2.7%	<b>MASSACHUSETTS</b> 4,941 / 32.7%
<b>TEXAS</b>	1,762 / 7.5%	<b>DISTRICT OF COLUMBIA</b> 1,584 / 29.8%
<b>WASHINGTON</b>	1,192 / 5.6%	<b>HAWAII</b> 460 / 7.6%
<b>ARIZONA</b>	918 / 10.3%	<b>ALASKA</b> 374 / 22.8%
Largest Decreases		
<b>CALIFORNIA</b>	-1,560 / -1.2%	<b>FLORIDA</b> -17,039 / -35.4%
<b>FLORIDA</b>	-1,160 / -3.6%	<b>TEXAS</b> -14,478 / -36.4%
<b>MICHIGAN</b>	-700 / -7.7%	<b>GEORGIA</b> -10,140 / -51.6%
<b>HAWAII</b>	-690 / -9.6%	<b>CALIFORNIA</b> -9,014 / -6.5%
<b>GEORGIA</b>	-675 / -6.6%	<b>NEW JERSEY</b> -7,916 / -45.7%

<sup>a</sup> Due to methodological changes, Colorado, North Dakota, South Dakota, Michigan, and Wyoming were excluded from the list of largest changes from 2007-2018.